

45th

**Joint Planning
Law Conference
Oxford**
www.jplc.org

15-17 September 2017
New College Oxford

**Apply before
July for Early
Bird Fee**

**CPD
Available**

**Scholarships
available**

Make Planning Great Again

Joint Planning Law Conference



Connecting the professions - dissecting the issues

The 45th annual Joint Planning Law Conference (the JPLC – known as ‘the Oxford conference’) will once again bring together leading experts from across the four key professions in planning.

Attended each year by town planners, chartered surveyors, solicitors, barristers and developers with an interest in planning and environmental issues, the JPLC provides the setting for vibrant multi-disciplinary discussion of the latest issues affecting the planning industry.

Learn

The conference offers a full programme with presentations from high-quality speakers, followed by opportunities for questions and discussions. Every speaker prepares an original, in-depth research paper which is distributed first to delegates at the conference. These papers will be valuable reference materials for your practice.

Network

Known for its friendly atmosphere, the conference affords a rare opportunity for open and constructive debate among a diverse group of planning professionals at all stages in their careers. Expand your network, catch up with old friends and colleagues, and enjoy a genuine exchange of ideas.

Enjoy

The JPLC is held in the beautiful surroundings of Oxford, with accommodation in the University’s New College and conference activities taking place in the Oxford Union Debating Chamber. The programme includes drinks receptions, two black-tie dinners, and time to explore the city.

Why attend the JPLC?

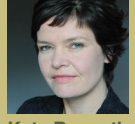
- The UK’s leading annual planning law conference
- Excellent speakers deliver topical research papers
- Ideal for planning professionals at all career stages
- A multi-disciplinary planning committee ensures high-quality content relevant to all delegates
- A 50% scholarship scheme for recently-qualified delegates (12 places available - 3 per profession)
- CPD is available
- Friendly, informal networking opportunities
- Beautiful Oxford University setting

“Fantastic venue and consistently superb quality of speakers, the JPLC is a ‘must-attend’ for anyone currently involved with planning and development in the UK.”

Expert speakers for 2017



Helen Hayes
MP



Kate Raworth
Oxford University



Nick Walkley
Homes England



Kathryn Hall
Mid Sussex DC



Christine Whitehead
LSE



Lucy Thomas
Ashurst LLP



Will Self
Brunel University



Janice Morphet
UCL



Chris Miele
Montagu Evans LLP



Jenny Wigley
No5 Chambers

The conference committee

The JPLC is a non-profit event organised jointly by members of the Law Society, the Bar Council, the Royal Town Planning Institute (RTPI) and the Royal Institution of Chartered Surveyors (RICS).

The Bar Council Michael Humphries QC; Paul Brown QC; Mary Cook; Rupert Warren QC

The Law Society Duncan Field, Norton Rose Fulbright LLP; Claire Dutch, Hogan Lovells International LLP; Matthew White, Herbert Smith Freehills LLP

RICS Rory Joyce, Brunel Planning; Mary Power, PowerHaus Consultancy; Robert Evans, Argent LLP

RTPI Mike Hayes CBE, Michael Hayes Consulting; Trudi Elliott CBE, RTPI; Adrian Penfold OBE, British Land

Programme

Friday 15 September

- 16:30 Arrival and registration and newcomers' tea with the committee, New College
- 19:00 Drinks reception in Cloisters, New College
- 20:00 Black tie dinner with keynote address by **Helen Hayes MP**, in New College Dining Hall

Saturday 16 September

- 08:00 Breakfast, New College
- 09:15 Chairman's introduction to the conference, Oxford Union
- 09:20 Opening address '**Doughnut Economics**'
Kate Raworth, Senior Visiting Research Associate, Environmental Change Institute, Oxford University and author of 'Doughnut Economics'
- 09:50 **Planning beyond Brexit** How will Brexit influence planning legislation and practice? What will stay the same, what will be lost and what will be foregone?
Prof Janice Morphet, Visiting Professor, Bartlett School of Planning UCL
- 10:45 Coffee
- 11:10 **Creating a better housing market** How will the new Homes England respond to the Housing White Paper? An expert perspective on the products and partnerships needed to increase construction and unlock the regeneration and growth of places.
Nick Walkley, Chief Executive, Homes England
- 12:05 **Local authority planning in context** How planning functions in practice as part of local authority business. Key areas where planning issues affect, and are affected by, other objectives. The likely future direction of planning within local authorities.
Kathryn Hall, Chief Executive, Mid Sussex District Council
- 13:00 **Lunch**
- 14:00 **Breaking down the barriers to housing delivery** What are the real barriers to building enough homes? What role can land value capture play in financing more housing? Is finance the major issue?
Christine Whitehead, Emeritus Professor of Housing Economics, London School of Economics
- 14:55 **Compulsory purchase – between a rock and a hard place?** The future for comprehensive regeneration following Aylesbury. Balancing the public interest with the rights of the public.
Lucy Thomas, Partner, Ashurst LLP
- 15:50 Pimms reception - rest of the afternoon free
- 16:00 Optional historical and literary walking tour 'Art and Architecture'
- 18:30 Sweet & Maxwell champagne reception, New College
- 19:30 Black tie dinner with guest speaker in New College Dining Hall
Will Self, Writer and Professor of Contemporary Thought at Brunel University
Late night entertainment

Sunday 17 September

- 07:30 Breakfast, New College
- 08:00 Chapel, New College
- 09:30 Chairman's introduction, Oxford Union
- 09:40 **"And thus the whirligig of time brings in his revenges": What future for the historic environment?** Have policy and practice evolved to the point where there is now no place which is not historic? Suggestions of how we might re-balance the scales between conservation and growth.
Dr Chris Miele, Senior Partner, Montagu Evans LLP
- 10:35 **Legal update** What have been the key issues emerging from cases over the past year?
Jenny Wigley, Barrister, No5 Chambers
- 11:30 **Conference close**

Registration form

Title	Forename	Address
<input type="text"/>	<input type="text"/>	<input type="text"/>
Surname	Post Code	<input type="text"/>
<input type="text"/>	<input type="text"/>	
Job Title	Telephone No.	<input type="text"/>
<input type="text"/>	<input type="text"/>	
Post nominals/Qualifications	Mobile No.	<input type="text"/>
<input type="text"/>	<input type="text"/>	
Organisation/Chambers (to appear on badge)	Email address	<input type="text"/>
<input type="text"/>	<input type="text"/>	
Please tick	Special room/dietary requirements	<input type="text"/>
<input type="radio"/> Solicitor	<input type="radio"/> Chartered Surveyor	<input type="radio"/> Developer
<input type="radio"/> Barrister	<input type="radio"/> Town Planner	
I have read and accept the conditions below	<input type="checkbox"/> Please tick if this is the first time you have attended	
Signed	Date	<input type="text"/>
<input type="text"/>	<input type="text"/>	

The organisers reserve the right to vary the speakers and content within the overall objectives of the conference. The organisers accept no responsibility for views expressed or contained in the conference documentation.

Please copy this form for additional places

Return forms to: Lucinda Howe, Quadrilect,
2 Burgon Street, London, EC4V 5DR
Tel: 020 7489 7628 Fax: 020 7489 8185
Email: lucinda@jplc.org

Please make payment at the time of booking by

Cheque

made payable to Quadrilect Ltd (VAT No. 791 4806 05)

BACS

Please contact: lucinda@jplc.org for bank transfer details

Credit/debit card

Please call the office, 020 7489 7628, with your details. A credit card carries a 4% +VAT surcharge; no charge for debit cards

Note: *Parking - If you require parking don't forget to tick the option and add the cost to your participation fee. There is no parking at New College. We have hired a car park nearby and a shuttle bus service will be provided at the beginning and end of the conference. Details will be sent with confirmation.

Scholarship scheme 50% discount off full fee is available to 12 junior member applicants (qualified for less than 5 years). Three places are allocated to each profession and only one applicant from each firm/organisation/set of chambers will be allowed. Applications must be received with cheques. Priority will be given to those who have not had a place before. Unsuccessful scholarship applicants will be offered the option of attending at full fee or receiving a full refund.

I would like to apply for a scholarship and have been qualified for years.

Data protection Occasionally the organising bodies may wish to contact you in respect of similar events. Please let us know in writing if you do not wish to be contacted.

Conditions of booking 1. Delegates are members of the RICS, RTPI, the Law Society, the Bar or another professional body. 2. Registration is considered binding immediately. Payment is required with the registration form or as soon after as possible. Early bird fee must be paid by end of June otherwise full participation fee will be due. 3. Closing date for registration is 14 August 2017. Numbers are limited and bookings will be taken on a first come, first served basis. Registrations will be accepted after this date if places are available. 4. Refunds will be given for cancellations made in writing before 7 August 2017 less an administration charge of £60+VAT. No refunds will be given after this date and unpaid invoices for the full fee of any person cancelling after this date will still be due before the event date. Substitute delegates will be accepted. 5. VAT will be charged at the prevailing UK rate.

The fees below include

- Two nights' B&B at New College
- Saturday lunch at the Oxford Union
- Two black tie dinners with wine
- Refreshments
- Conference materials

■ 1 x Early-bird participation fee

(bookings before 30 June 2017)

£659.00 + VAT = £790.80

■ 1 x Participation fee

(bookings after 30 June 2017)

£699.00 + VAT = £838.80

■ 1 x Scholarship fee

(see below for terms)

£349 + VAT = £418.80

■ 1 x Car parking*

£25.00 + VAT = £30.00